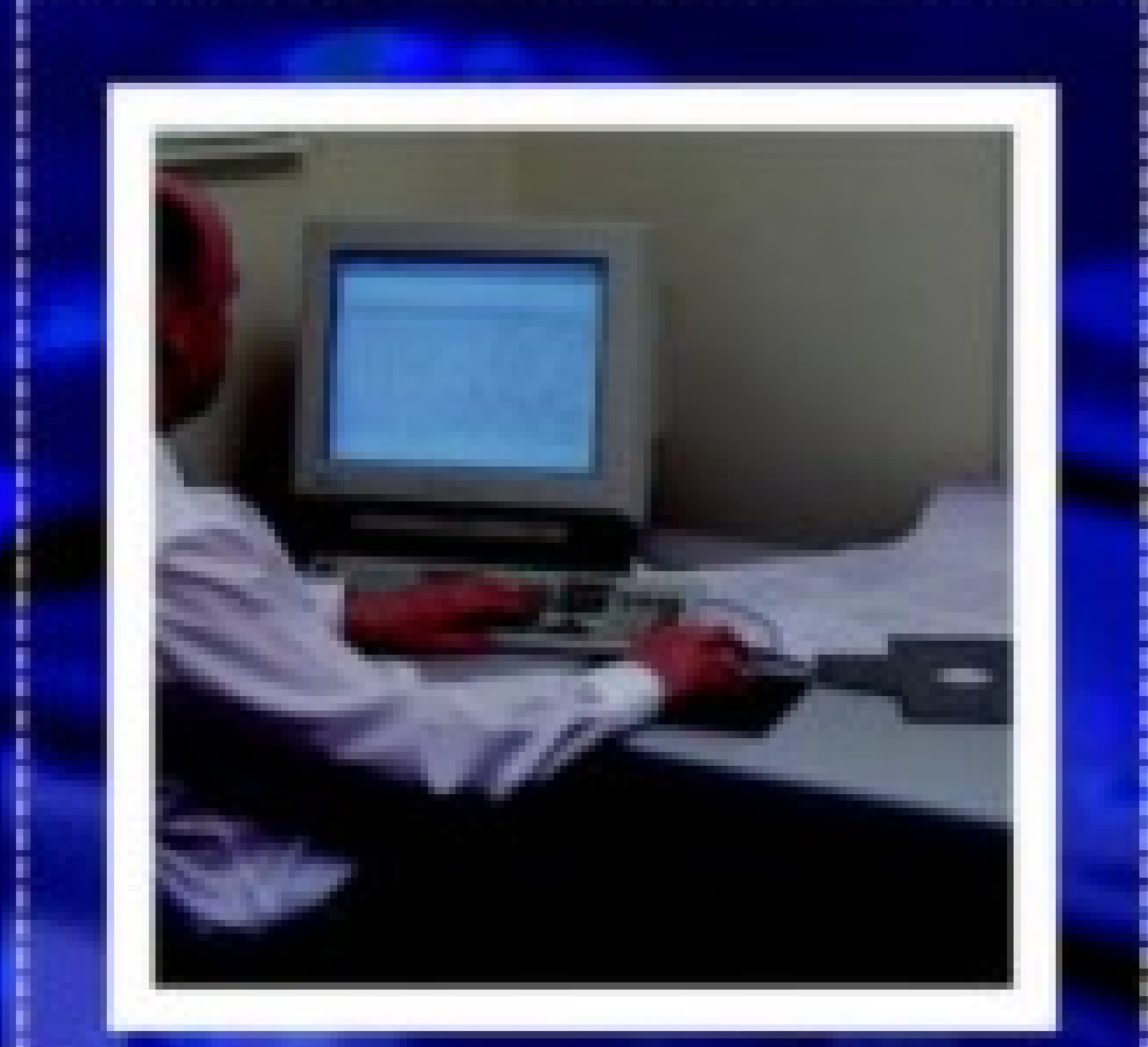
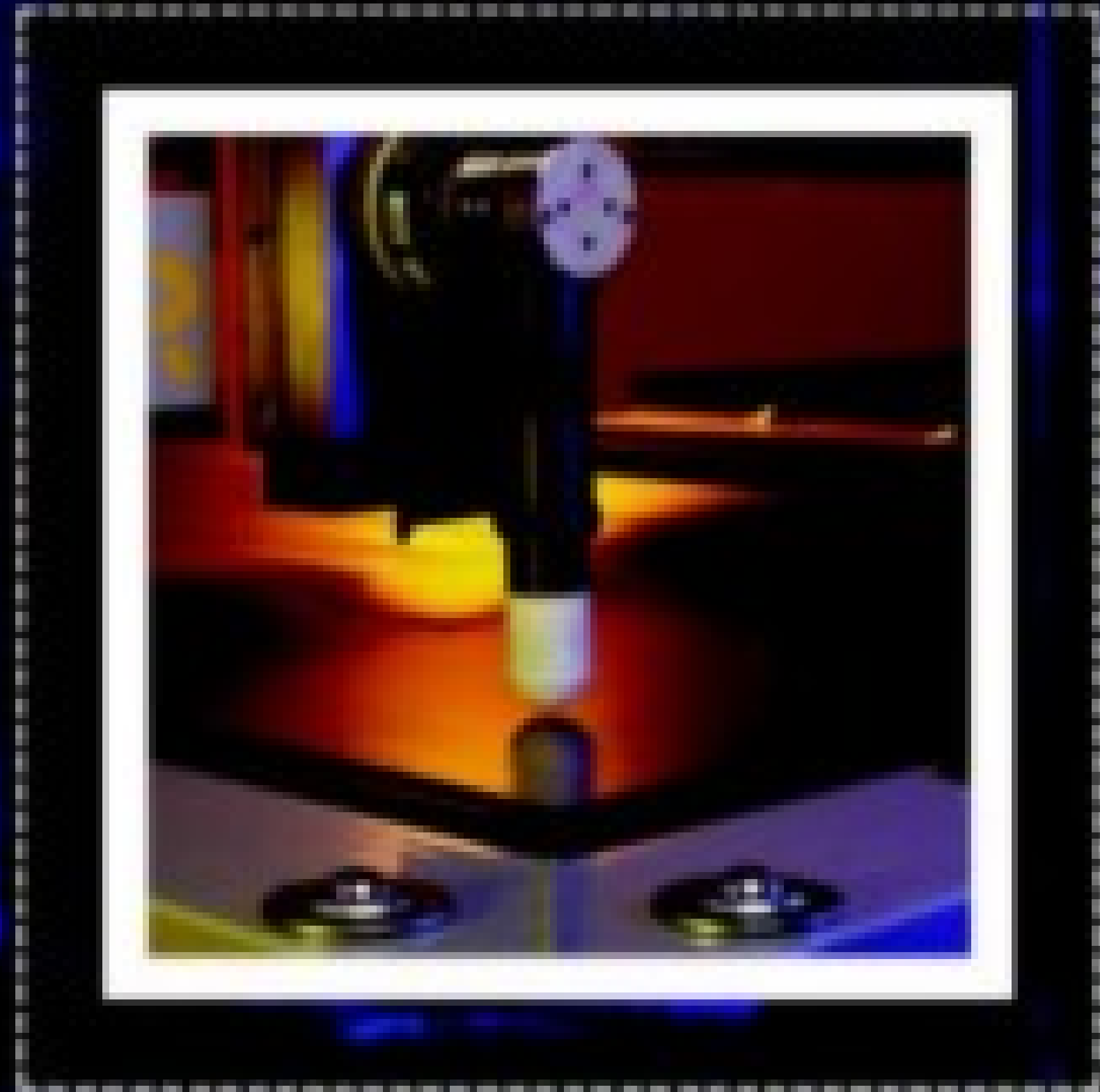
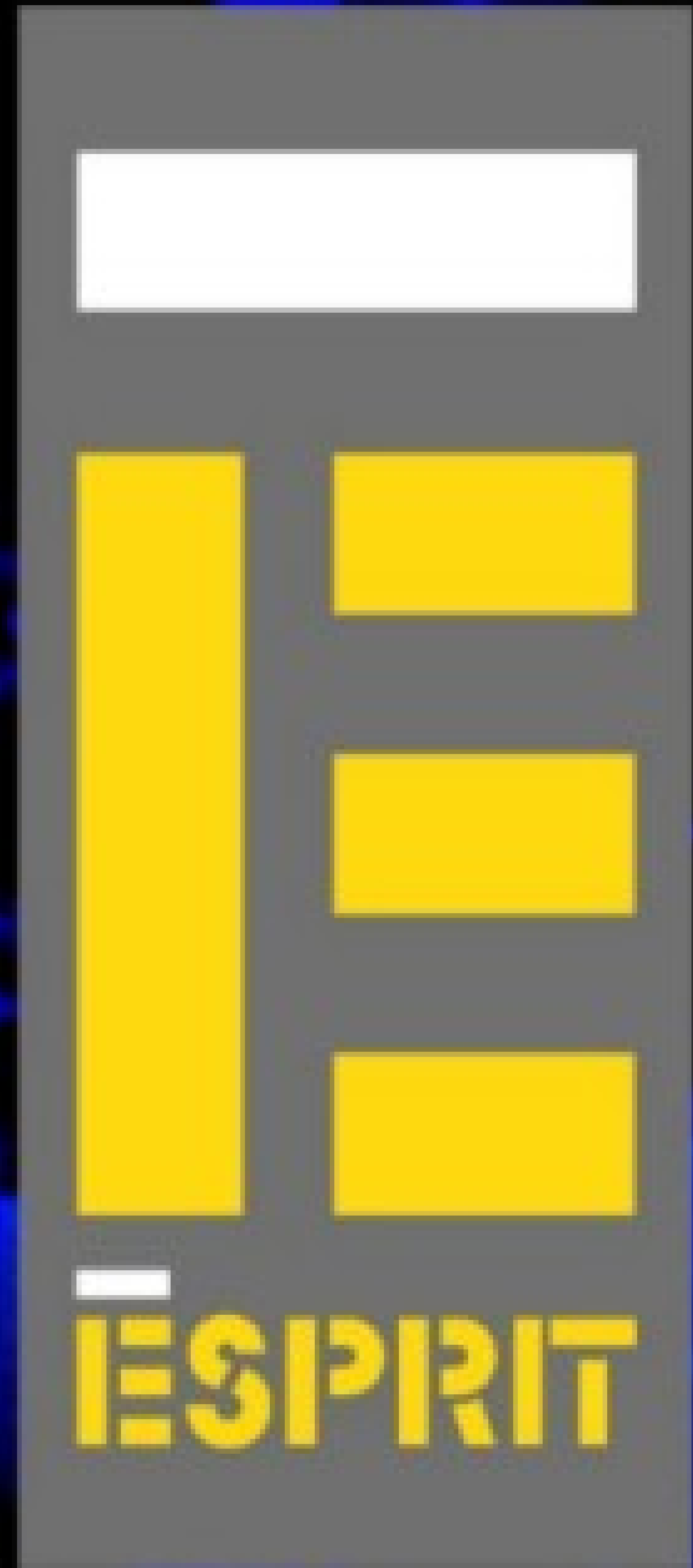


ESPRIT



AUTOMATION

*Any Shape, Any Metal, Fast!*

Founded in 1986, Esprit Automation Ltd has specialised from day one in the design & manufacture of high-performance CNC thermal-cutting machines and thermal-cutting CAD/CAM software. With our headquarters in Nottingham, England, we offer a full range of CNC plasma and oxy-fuel cutting machines covering virtually all applications.

Through continued research and development backed by a depth of knowledge and experience, Esprit continues to produce new innovative mechanised plasma cutting solutions and CAD/CAM software advances.

Our brand names including Lightning, Viper and Procut are acknowledged market leaders in thermal cutting. A global presence is demonstrated through our exports to over nineteen countries in four continents.

The first Esprit plasma-cutting system in 1986 dramatically changed the parameters of CNC plasma cutting, offering a flexibility and ease of use previously unseen. Since that time, our engineers and designers have incorporated numerous advances into the machines and many new models have been released. We have established strategic partnerships with leading component suppliers to ensure that our machines remain at the forefront of technological advancement.

Our Procut software division has been producing advanced CAD/CAM Nesting software for plasma and other flat-bed cutting applications since 1986. The thermal-cutting experience and knowledge base within our company has enabled our team of software developers to integrate the finer points of thermal cutting into the Procut system.

Esprit's experienced technical support staff work with our network of partners around the world to ensure that our customers achieve the best possible performance from their investment in Esprit technology. Whether it is installation, training or after sales support, in co-operation with our partners we strive to offer the very best service in the industry.

Our customers cover a wide range of metal processing industries including general and precision sheet metal, fabrication, steel service-centres, HVAC ductwork and a wide variety of product manufacturers. Automotive, agricultural and construction machinery, materials handling, food machinery and display equipment are all represented in our customer portfolio. Esprit Automation is focussed on the current and future needs our customer base. Our mission is simple - to provide the very best and most cost-effective mechanised thermal cutting solutions. We look forward to discussing your application.

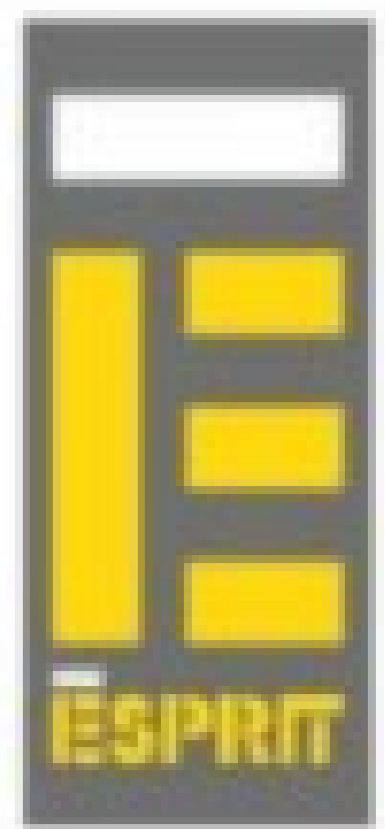
***Esprit Automation Limited - Your partner in mechanised thermal cutting.***

- ***Advanced machine-tool design***
- ***Hardened & ground machine-tool linear bearings***
- ***High precision motion components***
- ***PC/Windows CNC technology***
- ***Colour graphics display***
- ***Cable-chain hose/cable handling***
- ***Plate-marking tools***
- ***High-speed DNC communications***
- ***Flexible easy to use CAD/CAM solutions***
- ***Powerful automatic nesting systems***

***Any shape, any metal, fast!***

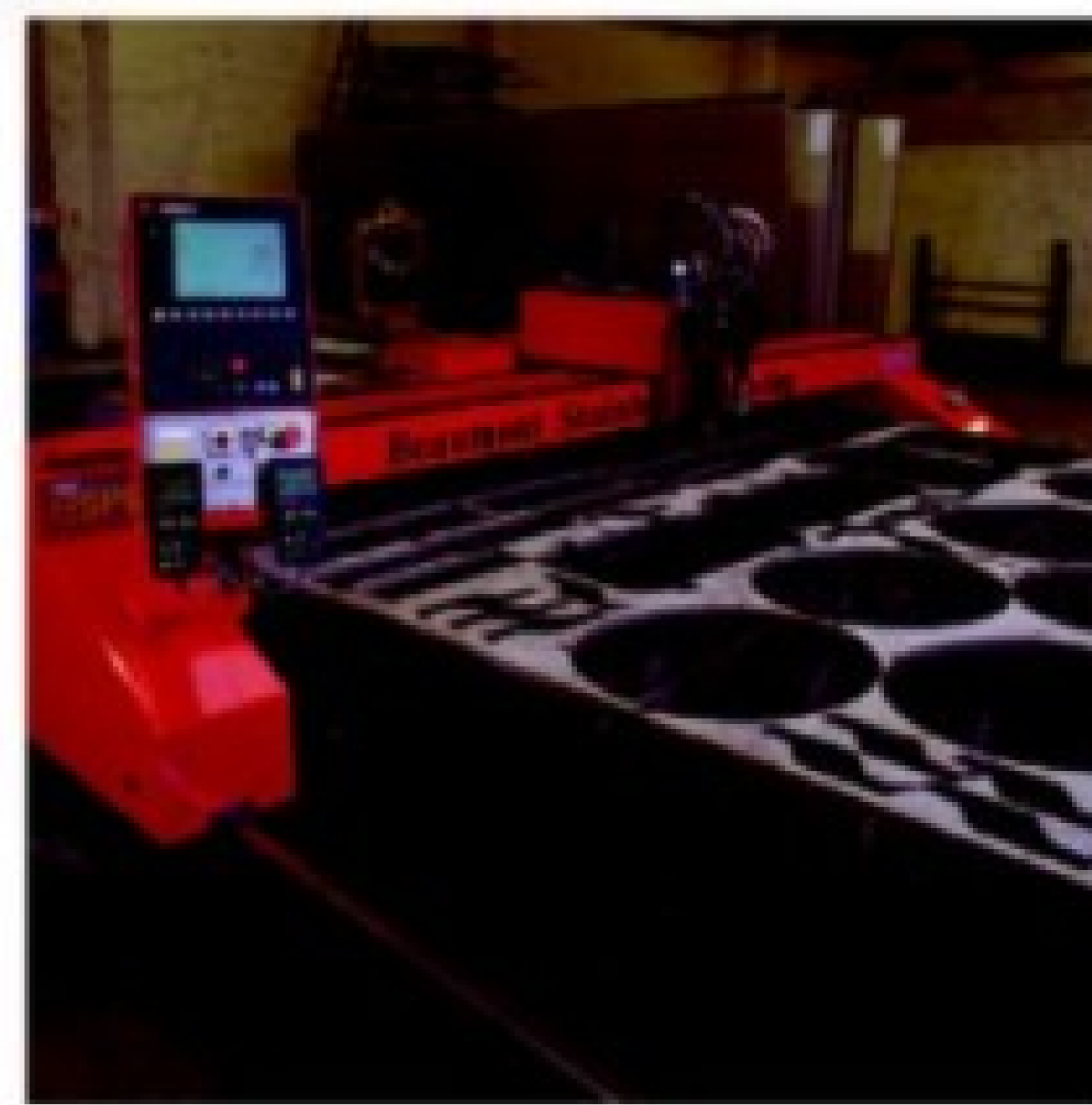
# VIPER

PRECISION CNC THERMAL CUTTING SYSTEMS



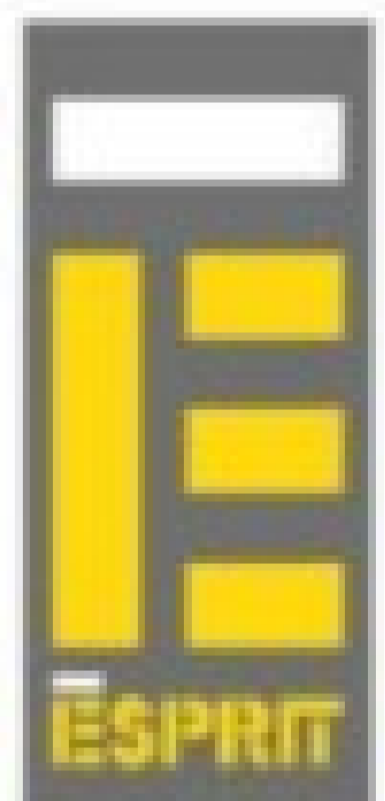
## Large-bed heavy-duty CNC machines

Esprit Viper machines are large-bed CNC portal cutting machines for up to eight plasma or oxy-fuel cutting stations. Designed and manufactured as precision machine tools, the Viper machines feature heavy-duty floor mounted rails, hardened and ground linear bearings, precision gearboxes and rack and pinion drives for excellent machine performance. With cutting widths from 1.5m to 6.5m (3'3"-21'4") and practically unlimited cutting lengths the Viper can be specified to suit virtually any application. Viper machines can be specified with high-definition or conventional plasma cutting systems up to 1000A or oxy-fuel torches for the thicker material ranges.



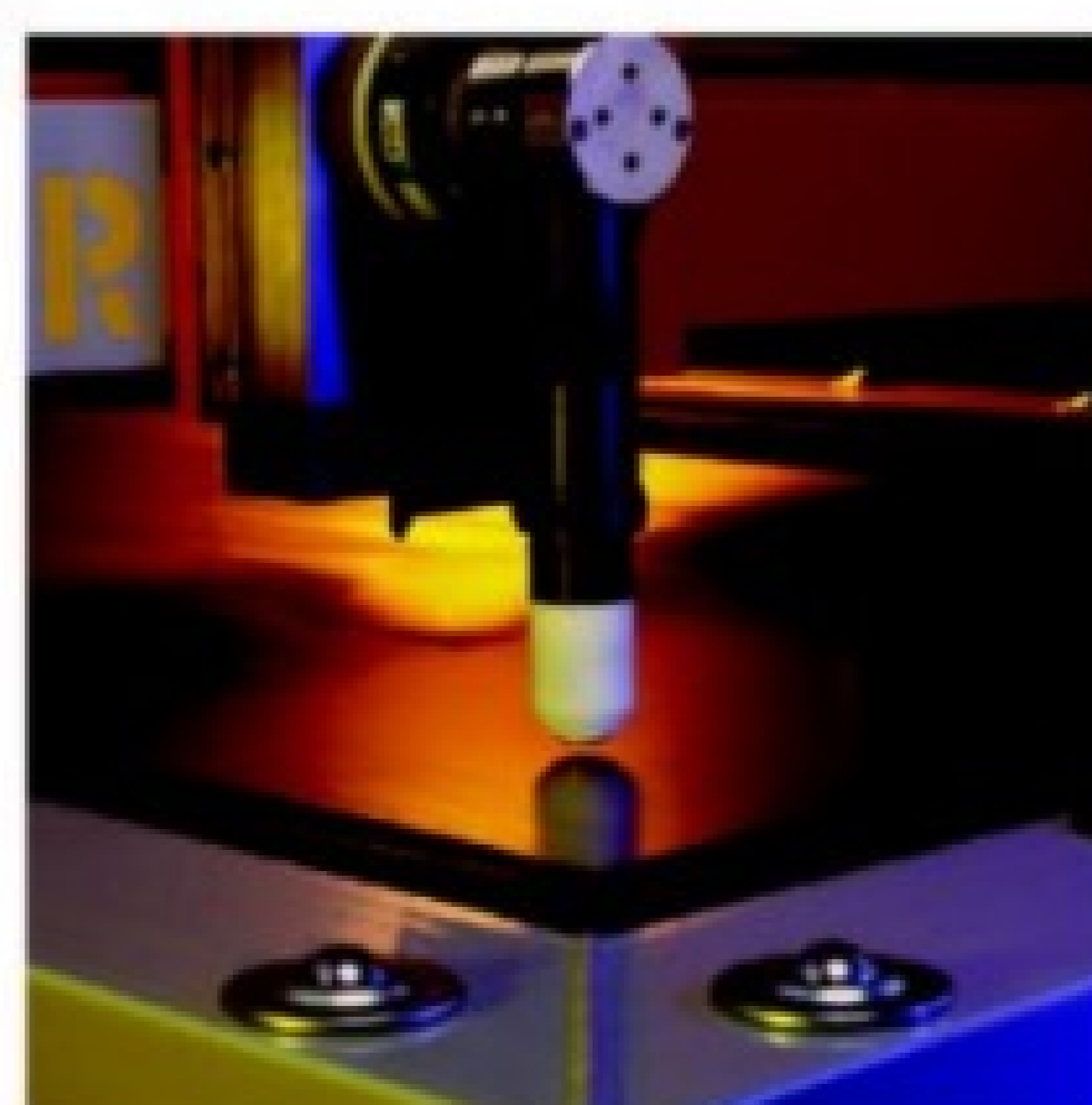
# LIGHTNING HD SERIES

PRECISION HIGH DEFINITION CNC PLASMA CUTTING SYSTEMS



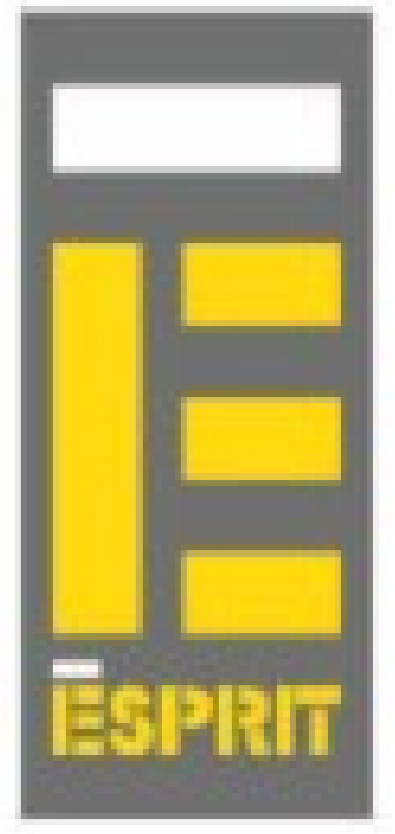
## Laserlike cut quality

Esprit Lightning HD machines are precision compact-bed machine tools for high-definition plasma cutting and are available in a range of popular sizes from 3.0m x 1.5m (10'x5") up to 6.5m x 2.0m (21'4"x6'6"). Designed along the same lines as many laser cutting machines, the Lightning HD fully exploits the high-definition plasma cutting process and produces clean, square, dross-free cuts on a wide range of ferrous and non-ferrous metals. High-power servos with precision gearboxes and dual direct-drive rack and pinions in the X axis and direct-drive rack and pinion in the Y axis produce smooth motion with high speed and acceleration. Twin hardened and ground linear bearings in both axes mounted to fully machined heavy-duty fabrications provide high accuracy and repeatability. A second high-definition plasma-cutting torch can increase productivity on high-volume applications.



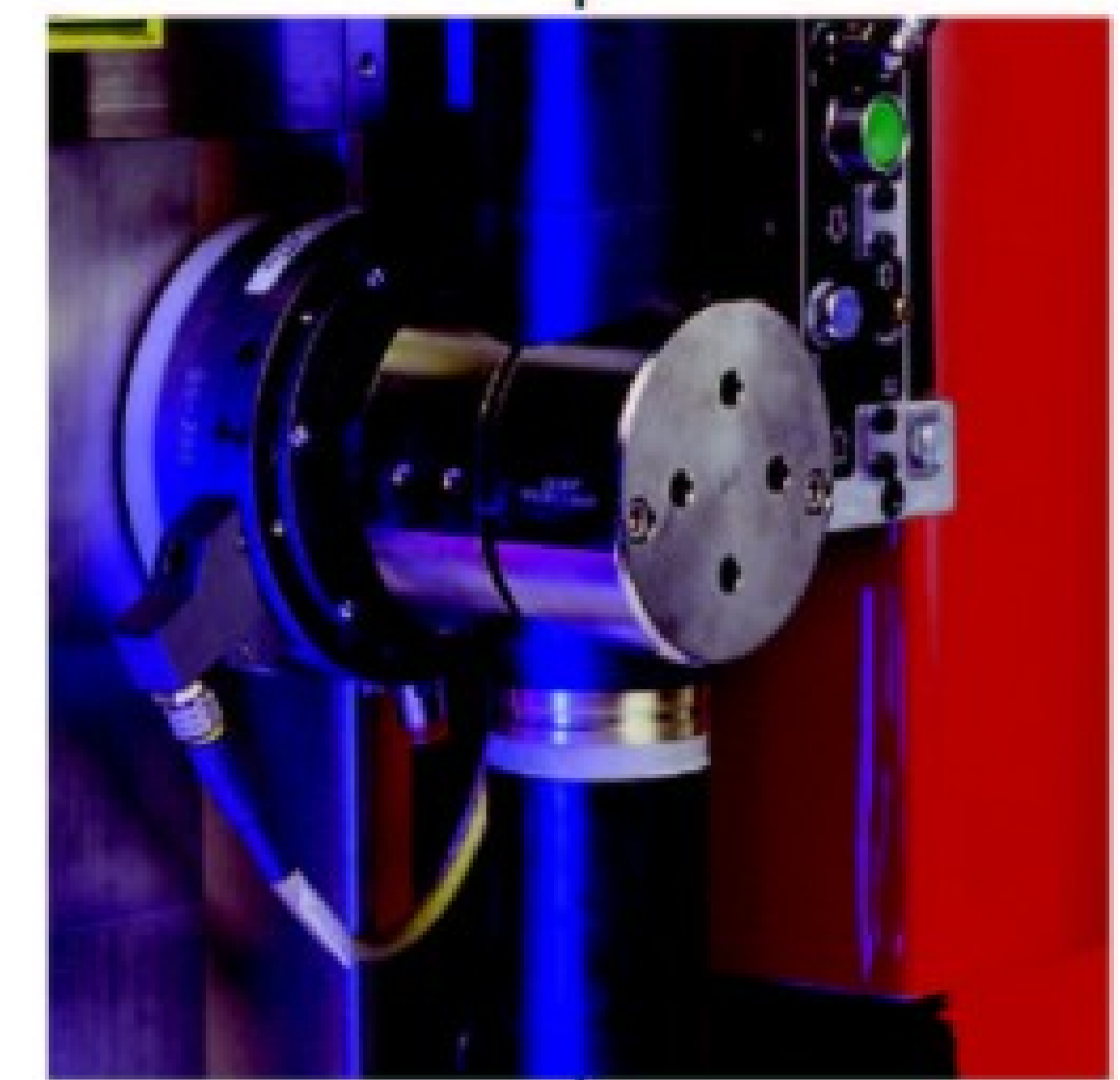
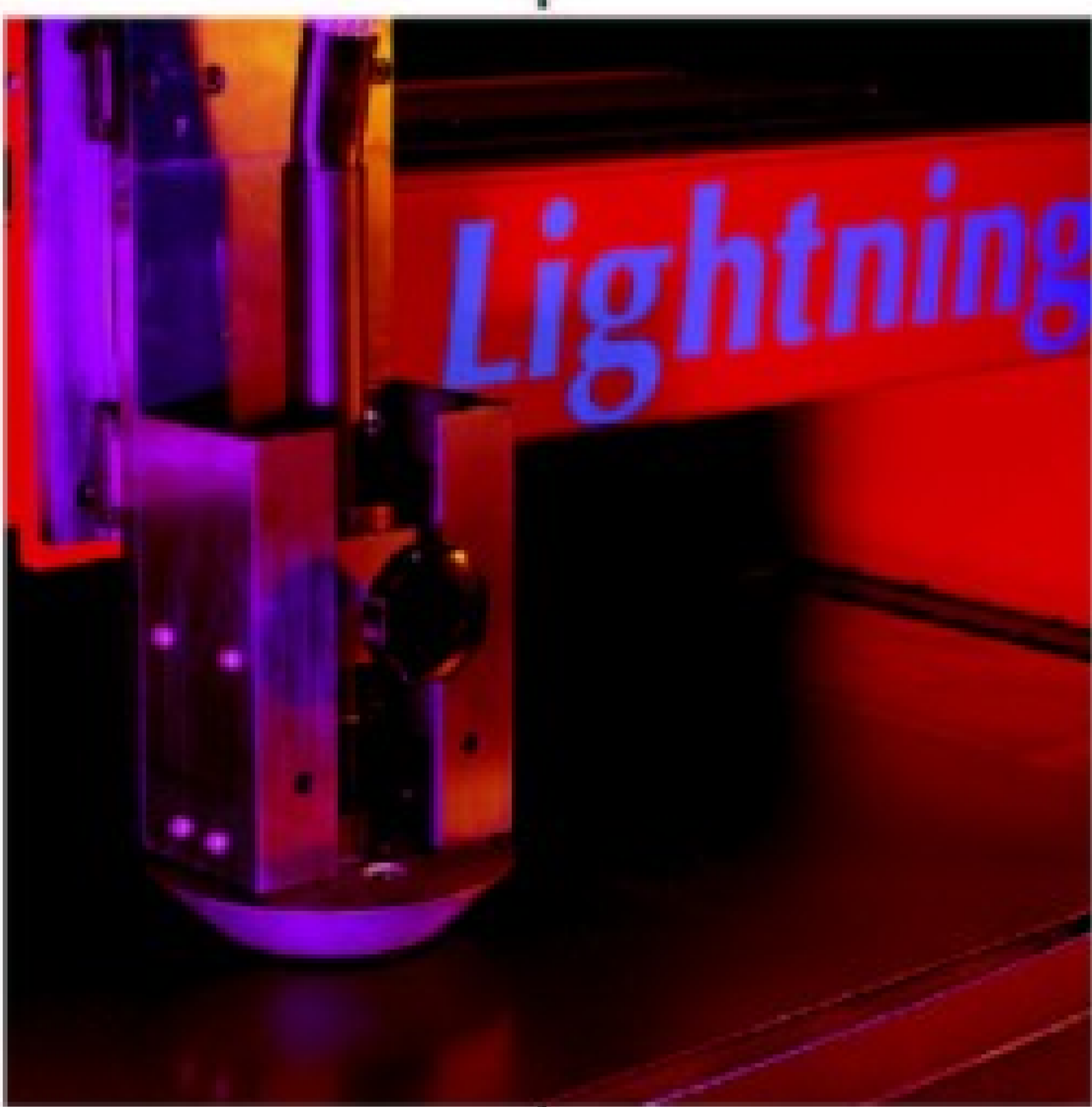
# LIGHTNING D SERIES

PRECISION CNC PLASMA CUTTING SYSTEMS



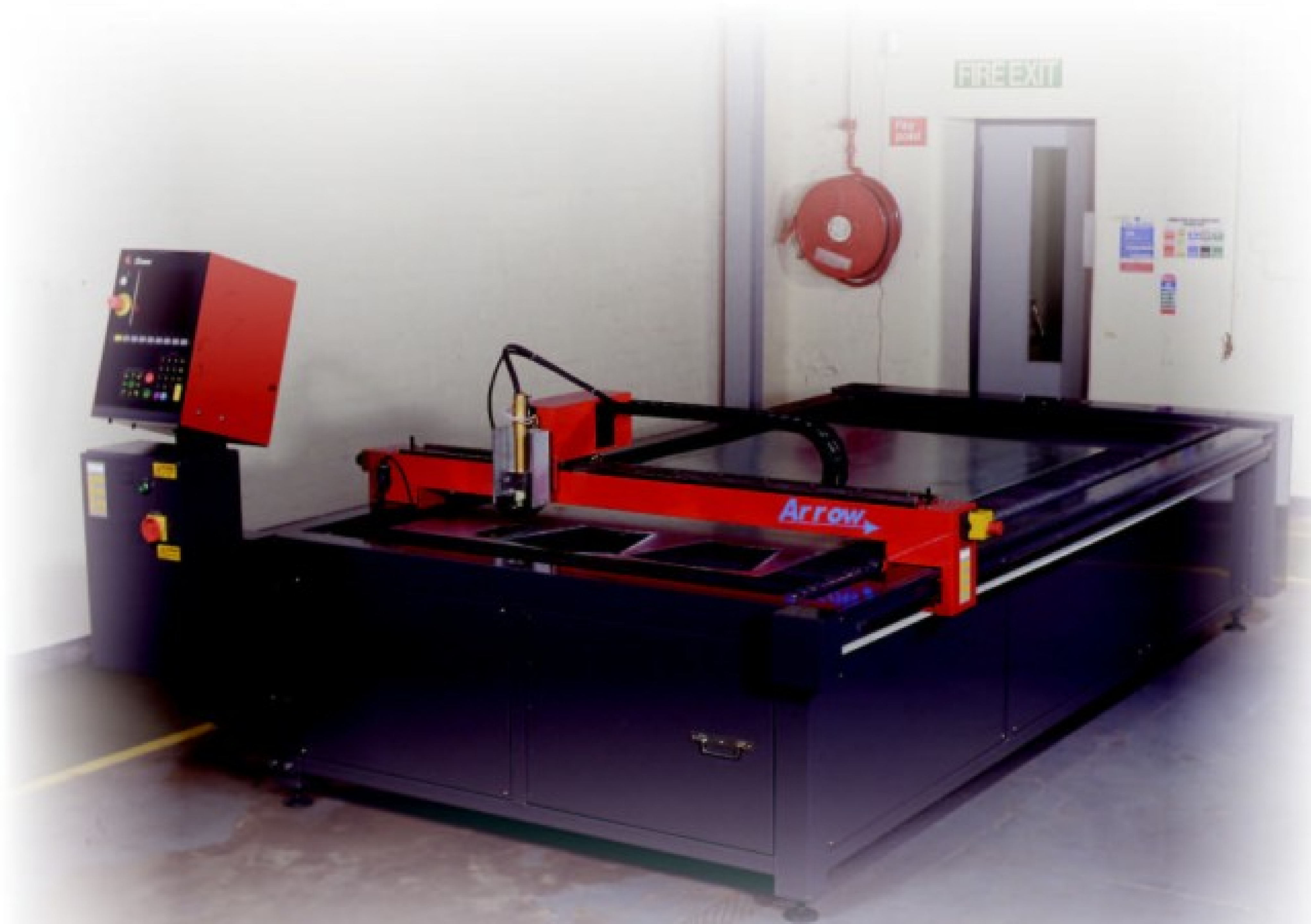
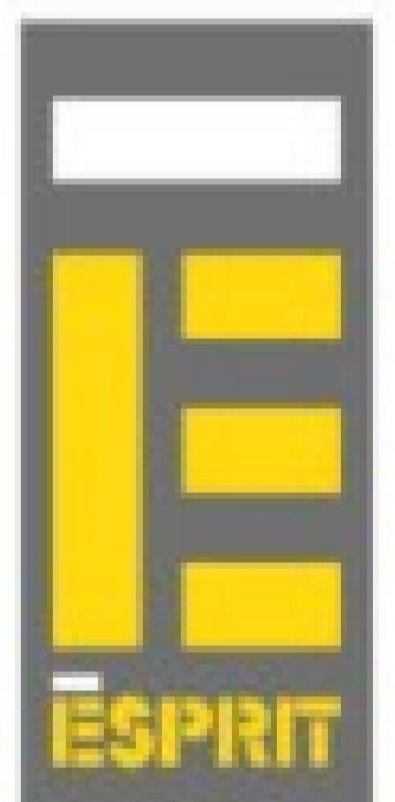
## **Purpose designed for accurate plasma cutting**

Lightning D machines produce high quality accurate components in virtually all metals. The machines are available in a range of popular sizes from 2.5m x 1.25m (8'x4') up to 8.5m x 2.0m (27'10"x6'6") and can be specified with up to two conventional or high-definition plasma-cutting units with up to 200A cutting current. The Lightning D machines have hardened and ground linear bearings in both axes and are available with either pneumatic plate-rider or arc-voltage torch height controls dependant upon the application.



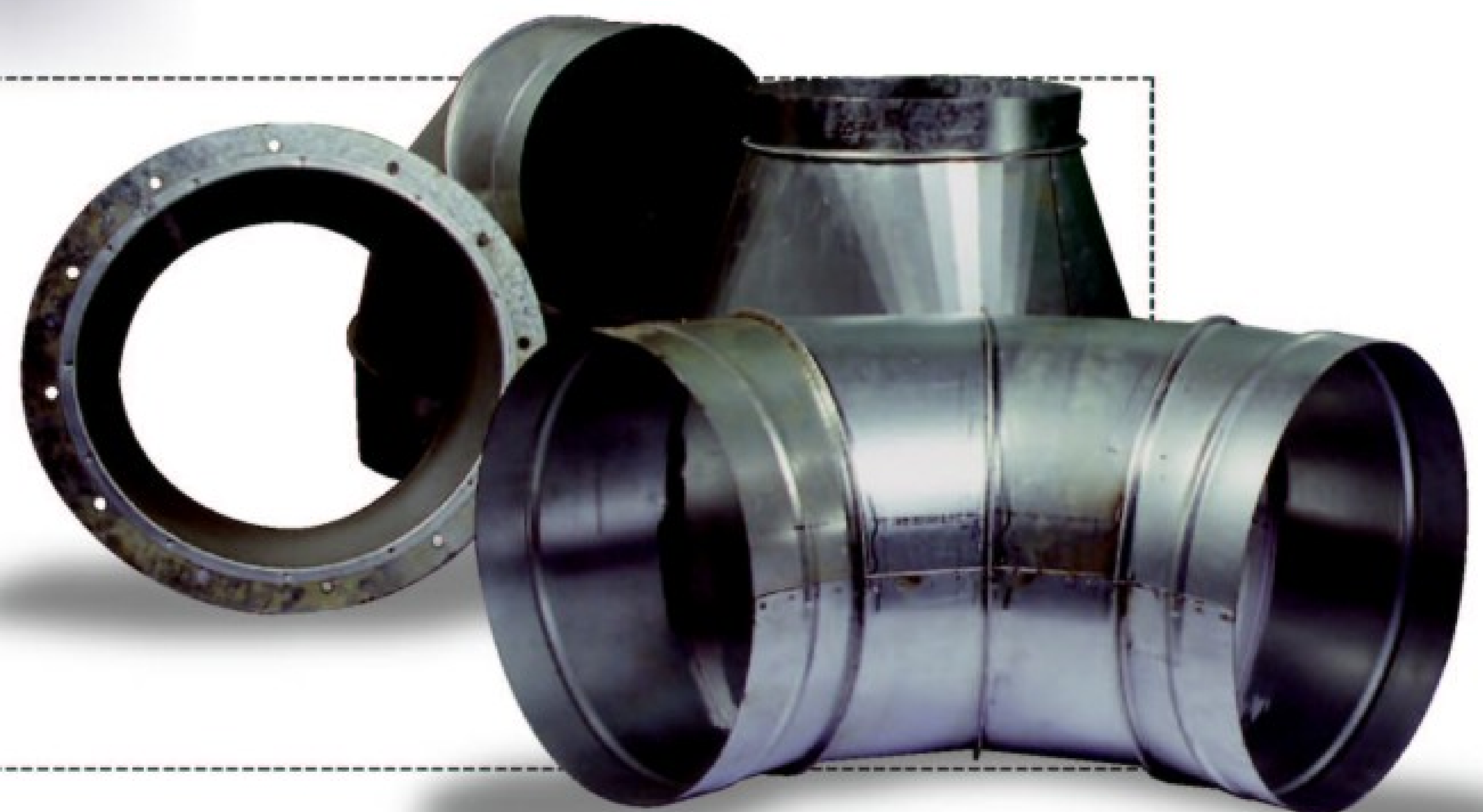
# ARROW

CNC PLASMA CUTTING SYSTEMS



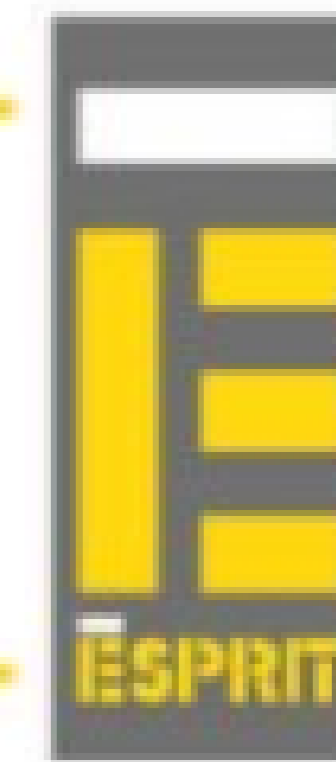
## **Cost effective plasma cutting**

The Arrow High-speed CNC plasma cutting system combines the latest CNC plasma cutting machine technology in a compact package and offers the best price/performance ratio in it's class. Twin side longitudinal drive, hardened and ground linear bearings all round and the latest inverter based plasma cutting units make the Arrow the clear choice for HVAC ductwork, general sheet-metalwork and light-fabrication applications.



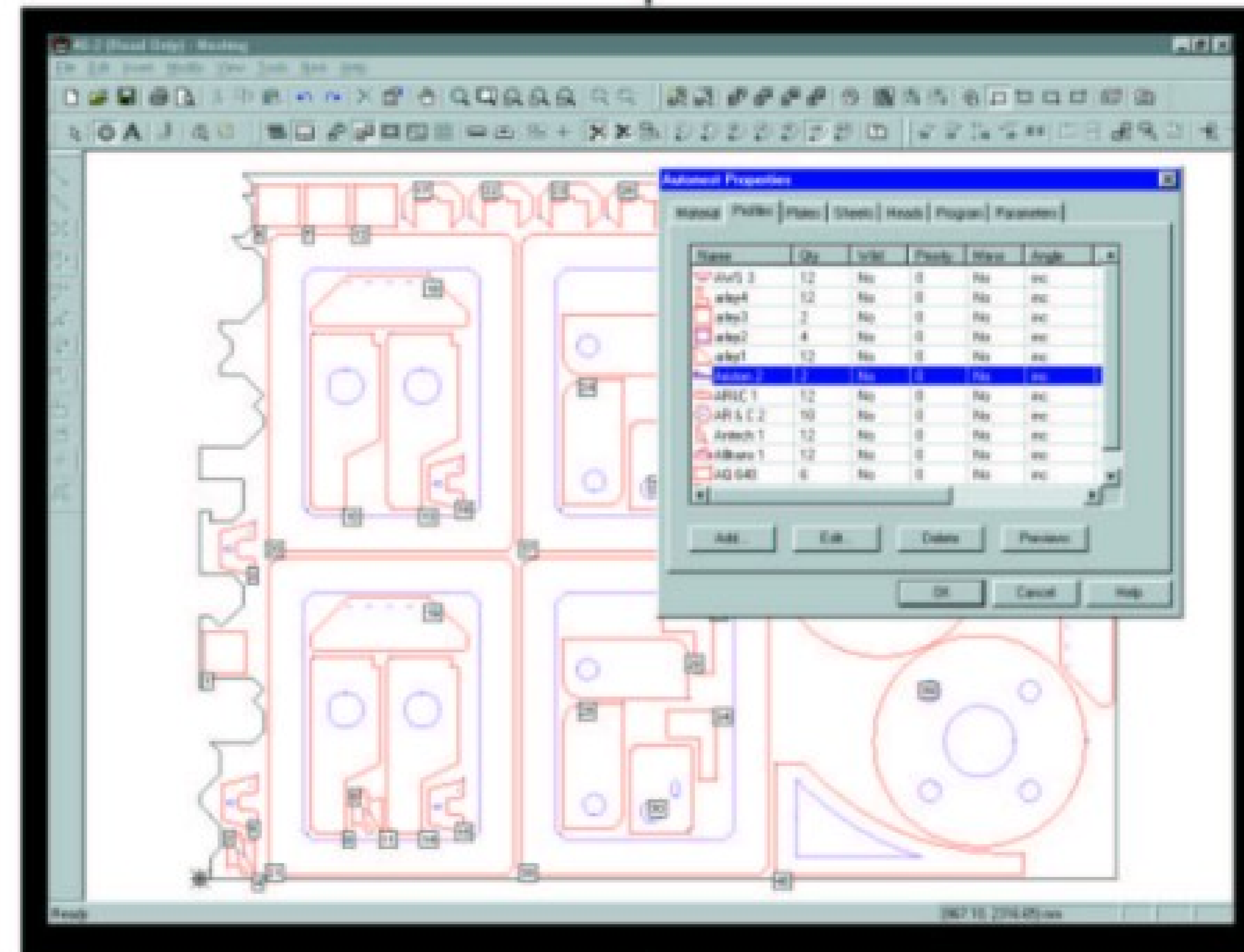
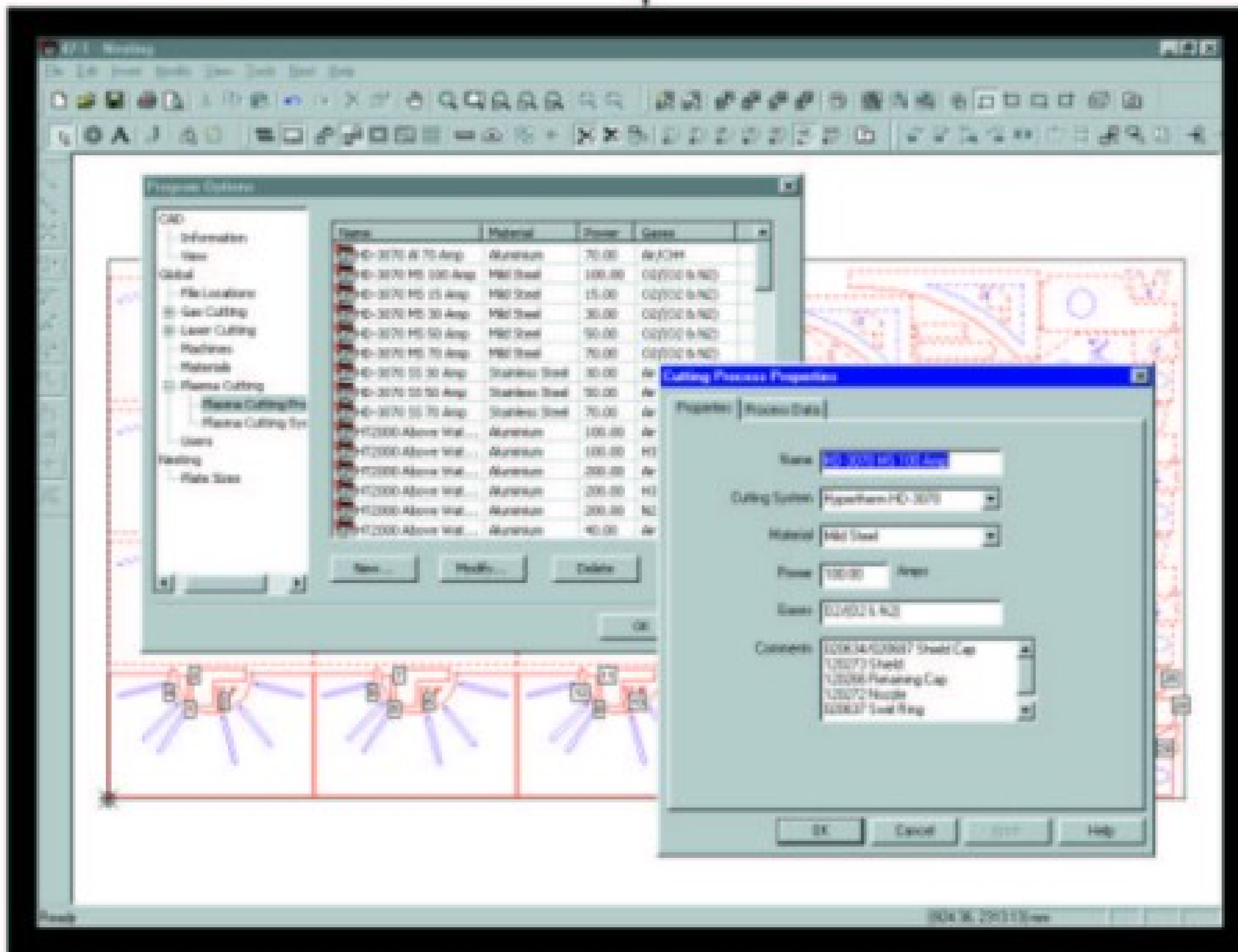
# PROCUT

SPECIALIST THERMAL CUTTING CAD/CAM SOFTWARE



## Specialist Thermal cutting CAD/CAM software

Procut has been designed and developed in-house by Esprit since 1986 and incorporates the plasma and oxy-fuel cutting knowledge and experience that only a machine manufacturer can accrue. Now completely re-written from scratch as a full 32 bit Windows applications, Procut has been designed specifically for flat bed thermal cutting applications. Procut CAD/CAM software has comprehensive drawing facilities, powerful automatic and interactive nesting systems and full DNC capabilities for high-speed machine communications. Remnant plate management, full profile-facility management, 3-D shape development and many other options can be specified to tailor the Procut system for any thermal cutting application.



# PARAGON

PC/WINDOWS CNC TECHNOLOGY



## Paragon - PC/Windows CNC Technology

The Paragon family of CNC units are specified across the entire range of Esprit machines. The advantages of PC/Windows CNC technology are well known in the machine tool industry and Esprit was the first CNC thermal cutting machine manufacturer to specify this exciting technology across the entire range of machines. High resolution colour graphics, the familiar Windows interface, fast processor speeds and effectively infinite memory storage are just some of the reasons that Windows based CNC's are the preferred choice.

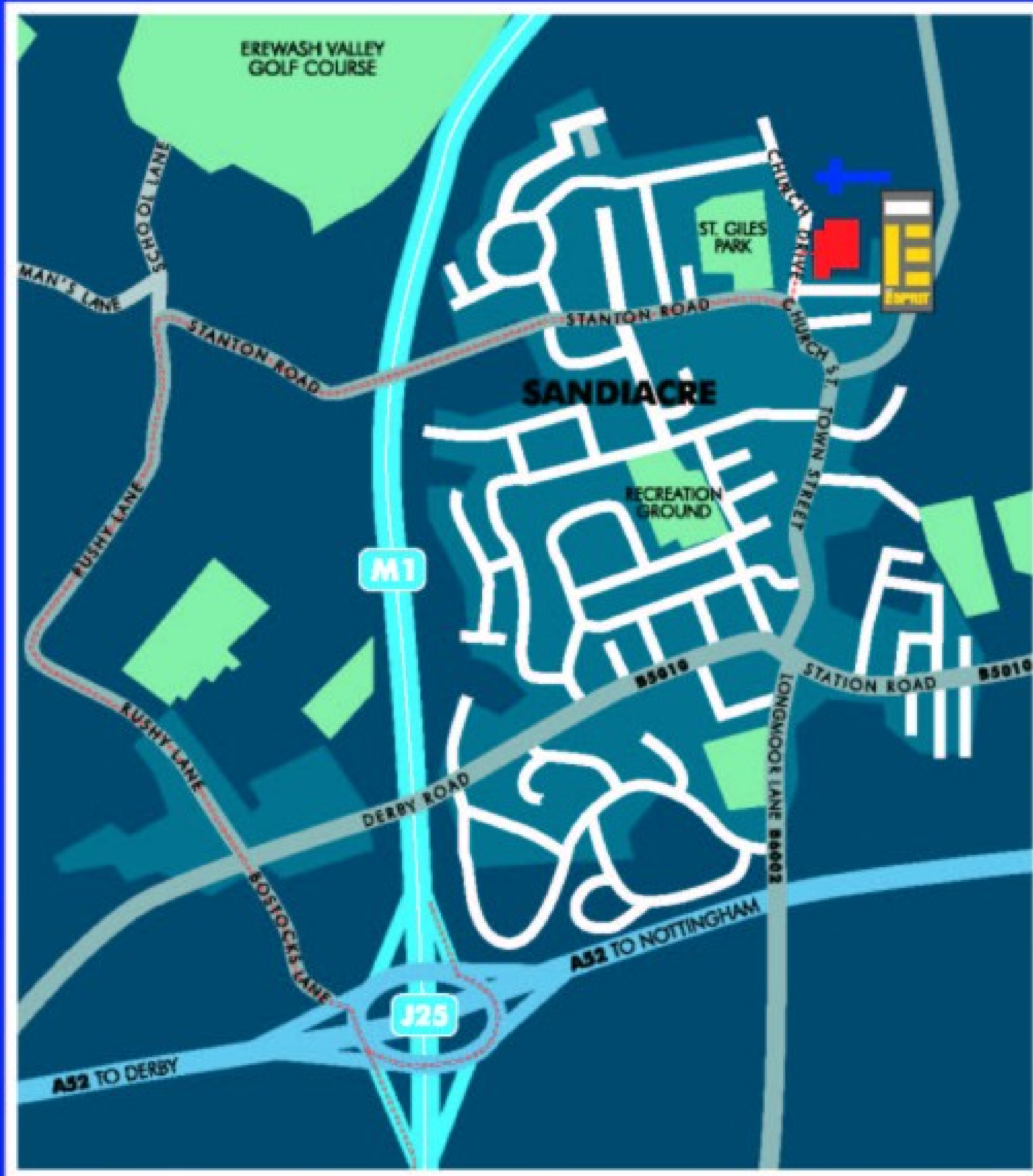
# SERVICE AND SUPPORT

HELP IS ON HAND

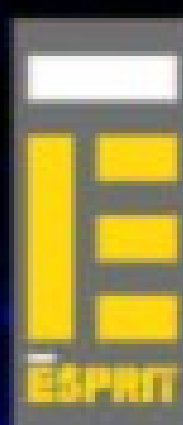


## Service & Support - Help is on hand

Once installed, it is important to know that in the event of a problem, help is on hand. We understand that our machines are often in the front line in terms of production flow, and our service and support personnel work with our partners around the world to ensure that if something does go wrong, the problem is speedily solved and production downtime is minimised. We can help maximise the return of your investment by site visits, preventative maintenance, operator and maintenance training and support via phone, fax and email.



'Placketts Mill, Esprit Automation's 70,000 sq ft. main manufacturing and development facility in Nottingham, England'.



### **Esprit Automation Limited**

Placketts Mill • Church Drive • Sandiacre • Nottingham • NG10 5EE • UK

Tel: 0115 939 1888 • Fax: 0115 939 1999

Tel: (International) +44 115 939 1888 • Fax: (International) +44 115 939 1999

email: [sales@esprit-automation.co.uk](mailto:sales@esprit-automation.co.uk) • [www.esprit-automation.co.uk](http://www.esprit-automation.co.uk)